

# CONSTRUCTION NOTICE

## Capital Line South LRT Utility Relocation Project

### JANUARY 2026

### PROJECT OVERVIEW

As part of the City of Edmonton’s Capital Line South LRT Extension Project, EPCOR is responsible for relocating all the power, water and drainage utilities to avoid potential conflicts with future LRT infrastructure currently being constructed by Ledcor – Capital Line’s Design-Builder. This line is an extension of the current Capital Line, which will operate from Century Park to Ellerslie Road.

### WHAT’S HAPPENING?

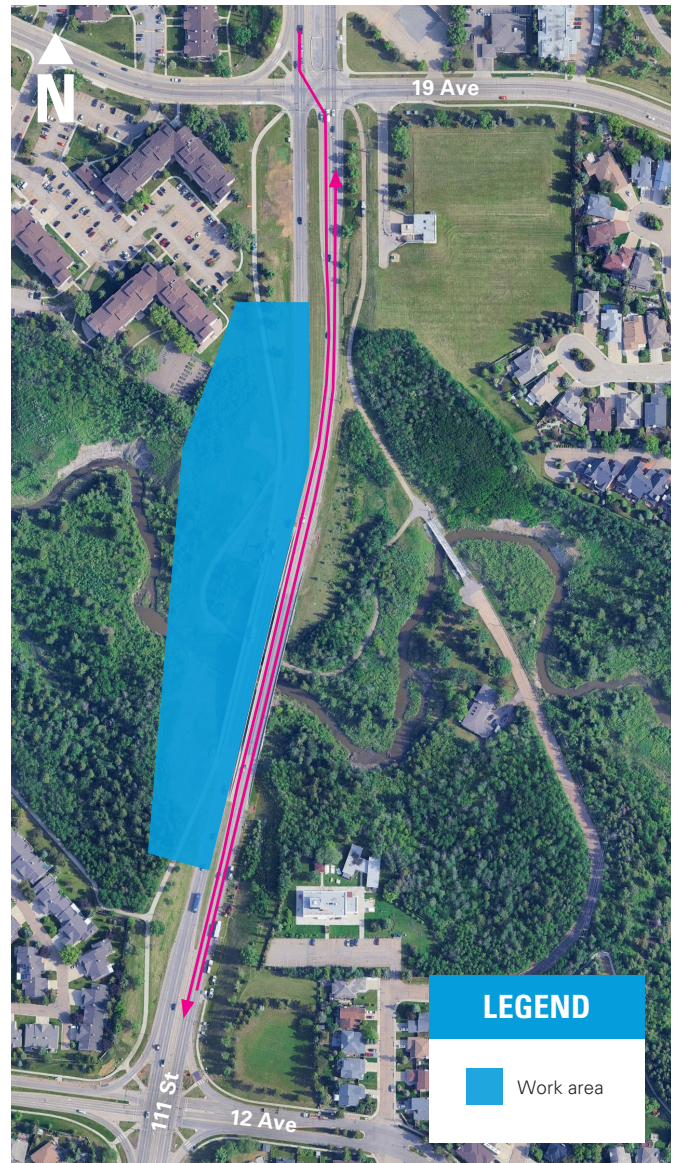
EPCOR will be working to relocate water infrastructure to the west side of 111 Street north of 12 Avenue.

Residents and businesses can expect to see activity that is typical to construction, including company/contractor vehicles and equipment.

#### Water Outages

Water outages are not anticipated as a part of this work. Some residents may be connected to temporary water, which may result in a brief interruption in water service. You will be notified 48 hours in advance if your property requires a temporary water service.

### MAP OF WORK AREA



## IMPACTS

- Closure two southbound lanes on the west side of 111 Street between 12 Avenue and 19 Avenue.
- The northbound lanes will be converted into one lane in each direction to allow two-way traffic.
- Continued closure of the sidewalk on the west side of 111 Street between 12 Avenue and 19 Avenue. A detour is provided at 19 Avenue and 12 Avenue.
- Continued closure of the walking trail on the west side of 111 Street between 12 Avenue and 19 Avenue.
- Similar lane closures are expected this spring, as Leducor continues construction of the future LRT.

## SCHEDULE

Construction on the west side of 111 Street north of 12 Avenue is scheduled to start in **early January 2026** to be completed within **ten weeks**. Leducor and the City of Edmonton will continue work along the LRT alignment during this time and will notify residents of a similar closure in the coming months after EPCOR has completed its utility work.



If you would like to receive notice of Leducor's continued work in the area, please go to the Capital Line South LRT Extension website or scan the QR code to register.

Landscaping and pavement will be restored after construction is complete and weather permits.

*Timelines are estimates and may change based on weather and construction conditions.*

## HOURS OF WORK

Regular working hours are **7:00 a.m. to 7:00 p.m. Monday to Saturday**. If required, these hours may be extended, and construction may occur on **Sundays from 9:00 a.m. to 5:00 p.m.**

EPCOR will ensure that the construction is completed within the requirements of the City of Edmonton Noise Bylaw.

## SAFETY

The construction areas will be fenced and/or marked as restricted areas. We will take every precaution to ensure public safety, and we request your assistance in keeping children and pets a safe distance from the construction site and the equipment.

We thank you for your patience and understanding as we perform this necessary work.

## MORE INFORMATION

EPCOR is committed to minimizing construction impacts where possible while we work in the community. If you have any questions regarding utility relocation work please contact us.

### EPCOR

**Phone:** 780-412-4200

**Email:** [EPCORprojects@epcor.com](mailto:EPCORprojects@epcor.com)

If you have questions regarding the future LRT please contact the City of Edmonton.

### City of Edmonton (for project-related questions)

**Phone:** LRT Projects Information Centre at 780-496-4874 (voicemail)

**Email:** [lrtprojects@edmonton.ca](mailto:lrtprojects@edmonton.ca)

**Website:** [edmonton.ca/capitalsw](http://edmonton.ca/capitalsw)

### Leducor (for construction-related questions)

**Phone:** Capital Line South public inquiry line at 780-540-7013 (voicemail)

**Email:** [capitalinesouth@ledcor.com](mailto:capitalinesouth@ledcor.com)