

OVERNIGHT WORK NOTICE

Capital Line South LRT Utility Relocation Project
111 Street Between 12 Avenue and 23 Avenue NW

SEPTEMBER 2023

PROJECT OVERVIEW

As part of the Capital Line South LRT Extension Project, EPCOR is responsible for relocating all the power, water and drainage utilities to avoid potential conflicts with the future Capital Line South LRT extension infrastructure. This is an extension of the current Capital Line, which will operate from Century Park to Ellerslie Road. The Capital Line South LRT Relocation Project began in May 2023 and is expected to be completed by the end of the year.

WHAT'S HAPPENING?

To meet the overall LRT project schedule, the City of Edmonton has requested that EPCOR perform the utility relocations within specific areas along the alignment prior to LRT construction.

Drainage work is currently occurring at several locations on the west side of 111 Street to relocate existing utilities. The work will continue during regular working hours; however, in order to connect the new system to the existing infrastructure, overnight work is also required in two work areas.

The work must be completed overnight as the Twin Brooks pump station will be shut down to accommodate the tie-in. This can only be done during low flow periods (overnight) to ensure there is no back-up of the drainage system.

Please note, overnight work is required again in late October 2023 at the same locations. A notification will be provided in advance of the overnight work.

HOURS OF WORK

The overnight work will occur on **September 13, 2023** from **10:00pm to 6:00am**. Regular working hours during the day continue to be from **7:00 a.m. to 7:00 p.m. Monday to Saturday**. If required, these hours may be extended, and construction may occur on **Sundays from 9:00 a.m. to 5:00 p.m.**

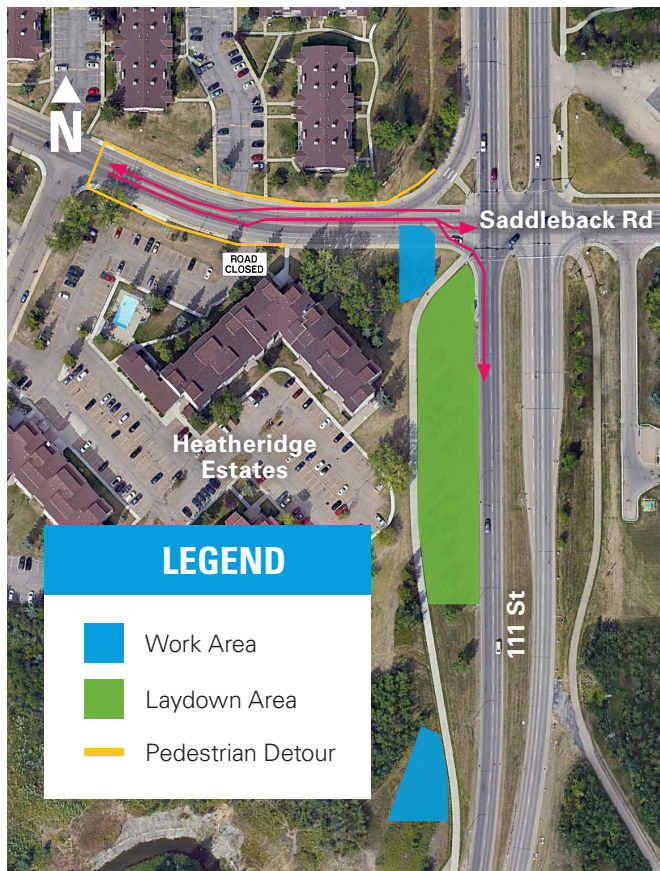
EPCOR will do everything possible to manage noise associated with the construction and will work to ensure that the construction is completed within the requirements of the City of Edmonton Noise Bylaw.

SAFETY

The construction areas will be fenced and/or marked as restricted areas. We will take every precaution to ensure public safety, and we request your assistance in keeping children and pets a safe distance from the construction site and the equipment. We thank you for your patience and understanding as we perform this necessary work.

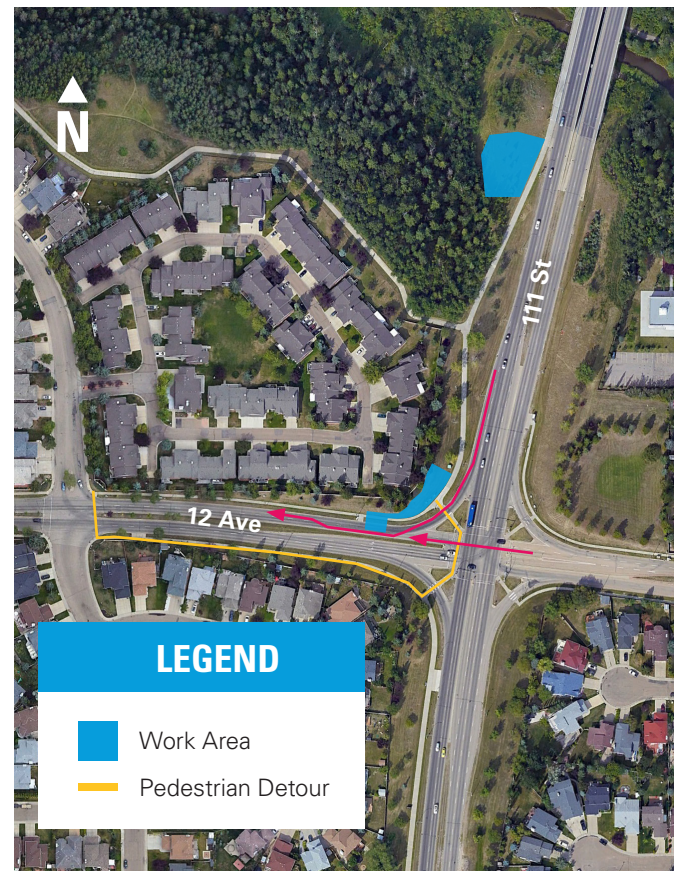
MAP OF WORK AREA #1

Work is ongoing during the daytime and overnight work will occur on **September 13, 2023** in the work areas indicated on the map. *Timelines are estimates and may change based on weather and construction conditions.*



MAP OF WORK AREA #2

Work is ongoing during the daytime and overnight work will occur on **September 13, 2023** in the work areas indicated on the map. *Timelines are estimates and may change based on weather and construction conditions.*



MORE INFORMATION

EPCOR is committed to minimizing construction impacts where possible while we work in the community. If you have any questions regarding this work please contact us.

EPCOR

Phone: 780-412-4200

Email: EPCORprojects@epcor.com

Website: epcor.com/capitalline

For up-to-date information and project notices, visit **epcor.com/capitalline**.

If you have questions regarding the future LRT please contact the City of Edmonton.

City of Edmonton

Phone: LRT Projects Information Centre at 780-496-4874 (voicemail)

Email: lrtprojects@edmonton.ca

Website: edmonton.ca/capitalsw