



# CONSTRUCTION UPDATE

## Steinhauer and Ermineskin Flood Mitigation Project Ermineskin Dry Pond Outlet Connections and Sewer Upgrades

### PROJECT UPDATE

As you may be aware, EPCOR is constructing two dry ponds: one in the Steinhauer School site and one in Ermineskin Park, as well as performing various sewer upgrades located in several areas of both neighbourhoods, to reduce the risk of flooding during intense rainfall events.

Work began on July 13 with the construction of the dry pond in Ermineskin Park. The construction in Ermineskin Park will also include re-orientation of two U9 soccer fields (Fields #5 and #6), which is expected to begin at the end of July.

The next phase of work will be the installation of the underground infrastructure to connect the dry pond in Ermineskin Park to the storm drainage system at the corner of 26 Avenue and 105A Street and on 29 Avenue just west of 106 Street. In addition, various sewer upgrades throughout Ermineskin will begin. The map on the next page shows the approximate location of the work sites.

### SCHEDULE

Construction for the dry pond outlet connections and sewer upgrades in Ermineskin will begin the **week of July 20** and is expected to be completed in **August-September 2020**, weather permitting.

The typical hours of construction will remain **7:00 a.m. to 9:00 p.m. Monday to Saturday**. If required, these hours may be extended, and construction may occur on Sundays from 9:00 a.m. to 7:00 p.m.

EPCOR will do everything possible to manage noise associated with the work. We will work to ensure that the work is completed within the requirements of the City of Edmonton Noise Bylaw.

While EPCOR continues work on this project, timelines for this construction are subject to change as we navigate developments associated with COVID-19.

### SEWER UPGRADE DETAILS

In addition to the construction of the dry ponds, various sewer upgrades located in areas of Steinhauer and Ermineskin are required. Some general construction impacts include:

- Temporary full road closures or lane reductions will be required. Signage will be placed prior to any work starting. Traffic flow will be maintained where possible. Flag people will be on site to manage traffic.
- At intersections, every attempt will be made to keep half the road open at all times.
- Driveway and cul-de-sac access will be maintained at all times.
- Temporary sidewalk/pedestrian access and parking adjacent to the work areas may be restricted.
- The trails into Ermineskin Park from 105A Street and 29 Avenue will be closed. Signage will be placed to advise pedestrians and cyclists of any necessary detours.
- EPCOR will work with the City of Edmonton to temporarily relocate bus stops as needed.

### SAFETY

The construction areas will continue to be fenced and/or marked as restricted areas. We will take every precaution to ensure public safety, and we request your assistance in keeping children and pets a safe distance from the construction site and the equipment.

We thank you for your patience and understanding as we continue this necessary work.

## WORK AREAS: ERMINESKIN

Construction for the sewer upgrades in Ermineskin will begin the **week of July 20** and is expected to be completed in **August-September 2020**, weather permitting. The upgrade locations are listed below.

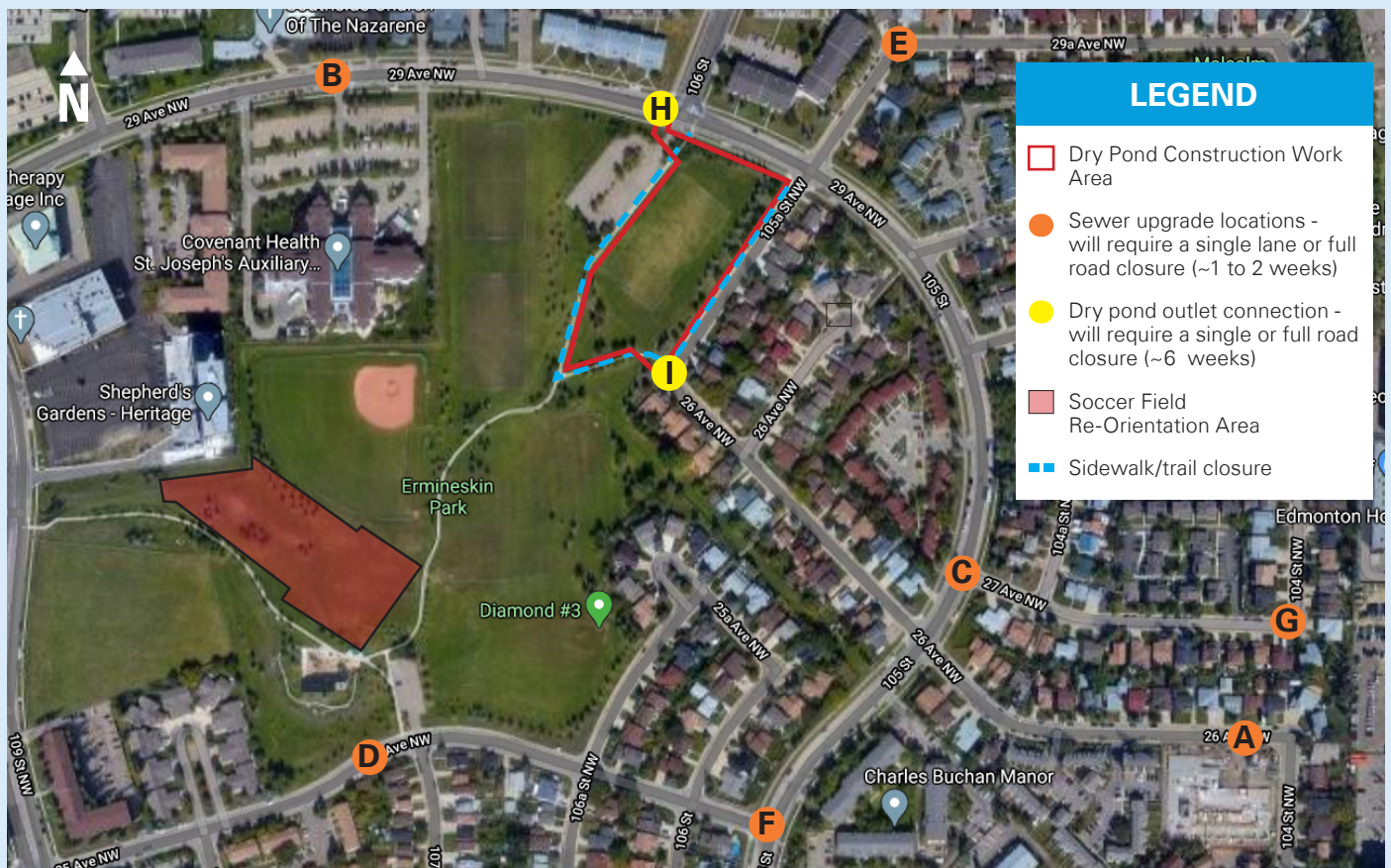
- **Location A:** 26 Avenue west of 104 Street
- **Location B:** Along 29 Avenue near St. Joseph's Auxiliary Hospital
- **Location C:** Intersection of 27 Avenue and 105 Street
- **Location D:** 25 Avenue near south entrance to Ermineskin Park
- **Location E:** Corner of 29A Avenue and 105A Street
- **Location F:** Intersection of 105 Street and 25 Avenue
- **Location G:** Corner of 27 Avenue and 104 Street
- **Location H:** 29 Avenue just west of 106 Street
- **Location I:** Corner of 26 Avenue and 105A Street

The dry pond outlet connections (Location H and Location I) are expected to **approximately 6 weeks**, weather permitting.

The remaining sewer upgrade locations (Locations A to G) are expected to take **approximately 1 to 2 weeks per location**, weather permitting.

Please note, multiple work locations are planned to be under construction at the same time.

Once work is complete at each location, the area will be temporarily restored with gravel or a steel plate will be placed on top until the other locations in the neighbourhood have been completed. Once all the upgrades have been completed, paving will be done.



## FOR MORE INFORMATION

**EPCOR Drainage Services**

**Phone:** 780-509-8080

**Email:** [EPCORdrainage@epcor.com](mailto:EPCORdrainage@epcor.com)

**Visit:** <https://www.epcor.com/steinhauerandermineskin>